

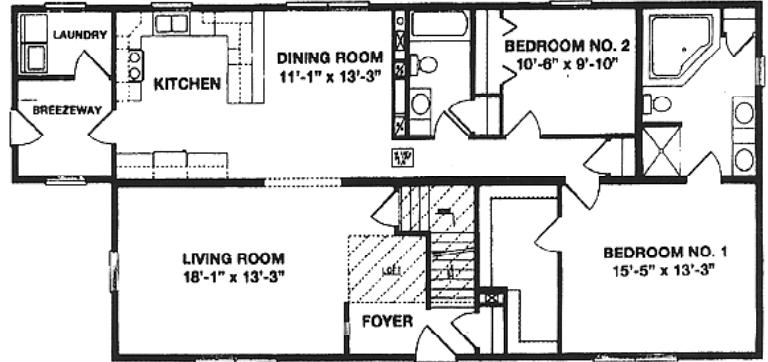
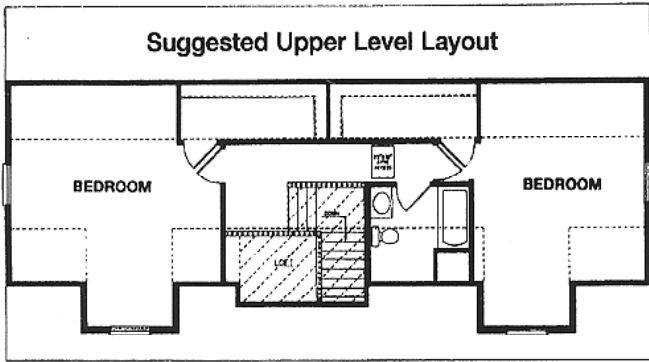
Crawspace Floor Plan

Length 60'52"  
Depth 28'-0"  
Living Area 1568 sq. ft.  
800 sq. ft. in unfinished 2nd. story

# Portsmouth

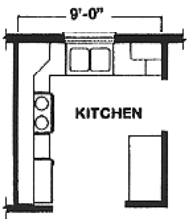


Phone: 313-561-8618 FAX: 313-561-5750

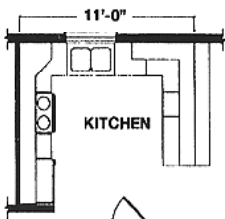


Basement Floor Plan

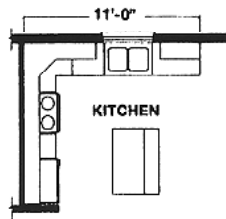
## Kitchen Options for Portsmouth & Plymouth



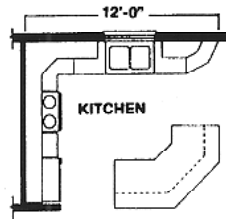
OPTION "100" KITCHEN



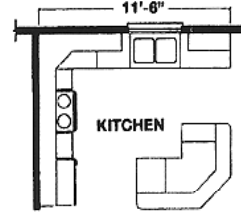
OPTION "102" KITCHEN



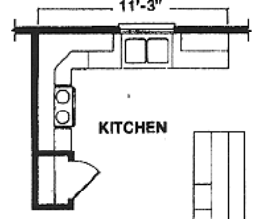
OPTIONAL STRAIGHT ISLAND KITCHEN



OPTIONAL EXTENDED "CNR" KITCHEN W/ANGLED ENDS

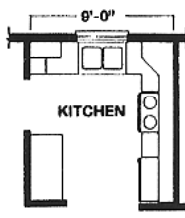


OPTIONAL BCR ISLAND KITCHEN

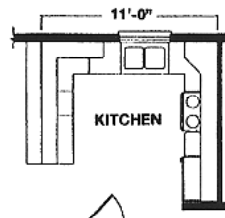


OPTIONAL "104" KITCHEN

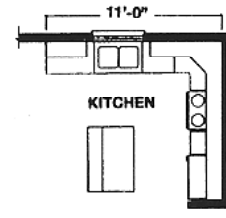
## Kitchen Options for Manchester & Worcester



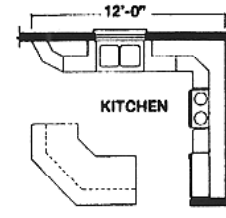
OPTION "100" KITCHEN



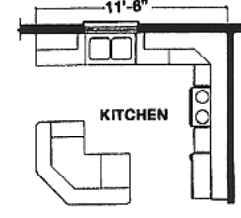
OPTION "102" KITCHEN



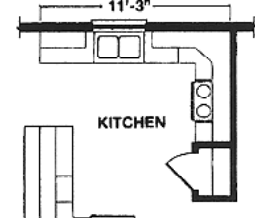
OPTIONAL STRAIGHT ISLAND KITCHEN



OPTIONAL EXTENDED "CNR" KITCHEN W/ANGLED ENDS



OPTIONAL BCR ISLAND KITCHEN



OPTIONAL "104" KITCHEN