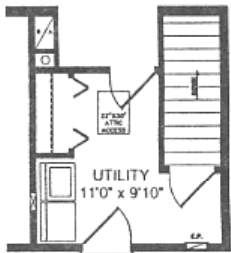


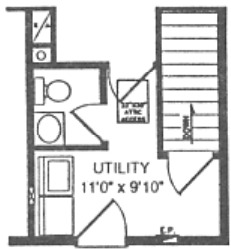
Brookside



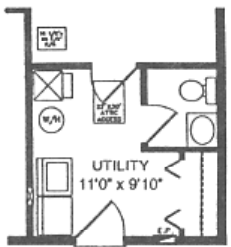
Phone: 313-561-8618 FAX: 313-561-5750



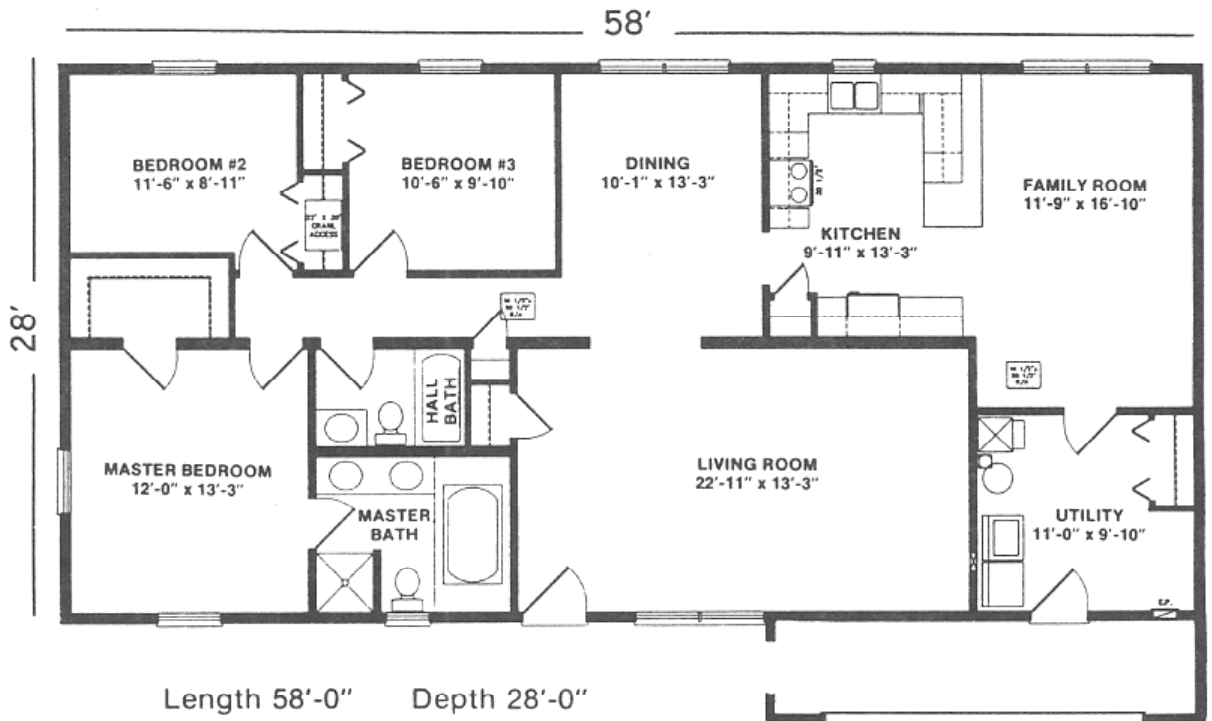
**OPTIONAL
BASEMENT PLAN**



**BASEMENT PLAN W/
OPTIONAL 1/2" BATH**



**CRAWLSPACE PLAN W/
OPTIONAL 1/2" BATH**



Length 58'-0" Depth 28'-0"
Living Area 1624 sq. ft.

YOUR LOCAL BUILDER: