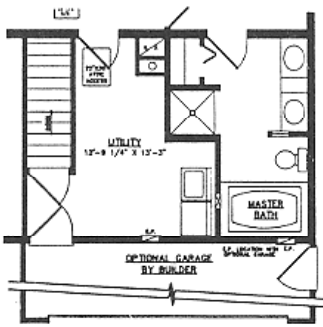


Willowbrook

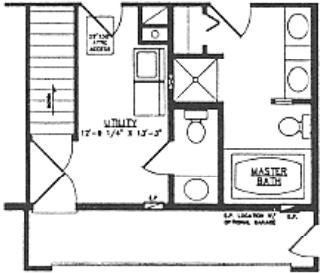


Phone: 313-561-8618 FAX: 313-561-5750

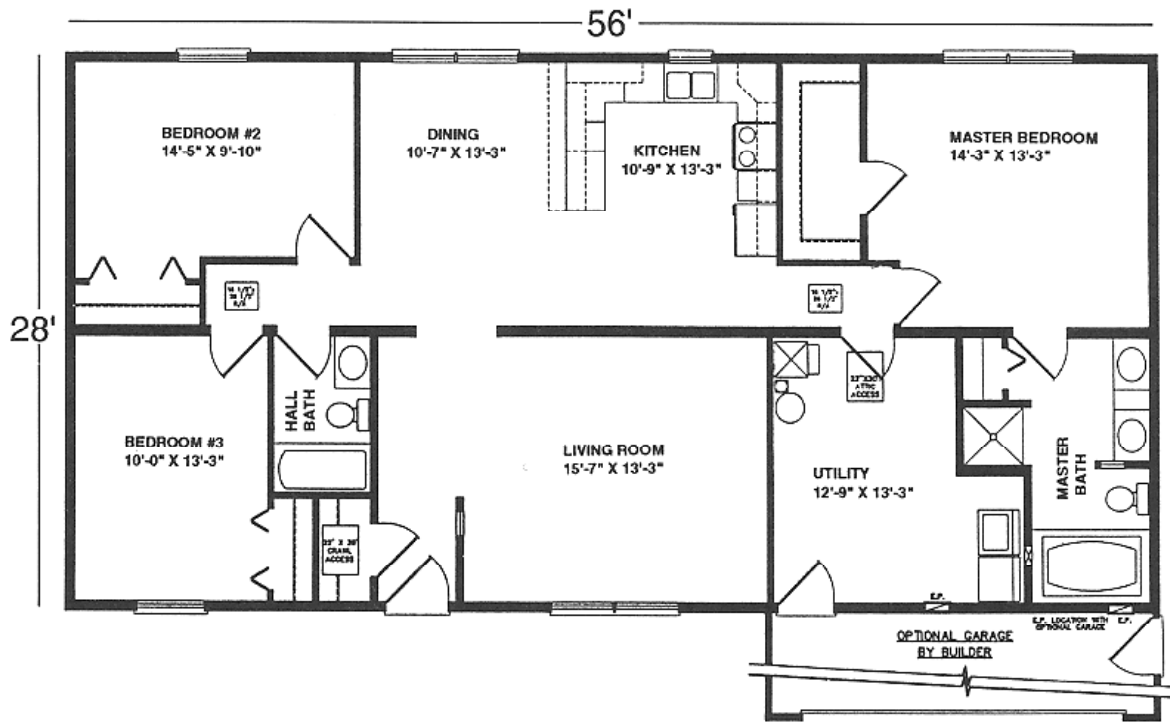
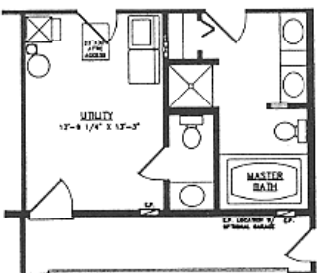
STANDARD BASEMENT PLAN



BASEMENT PLAN w/ 1/2 BATH OPTION



CRAWLSPACE PLAN w/ 1/2 BATH OPTION



Length 56'-0" Depth 28'-0"
 Living Area 1568 sq. ft.

YOUR LOCAL BUILDER: